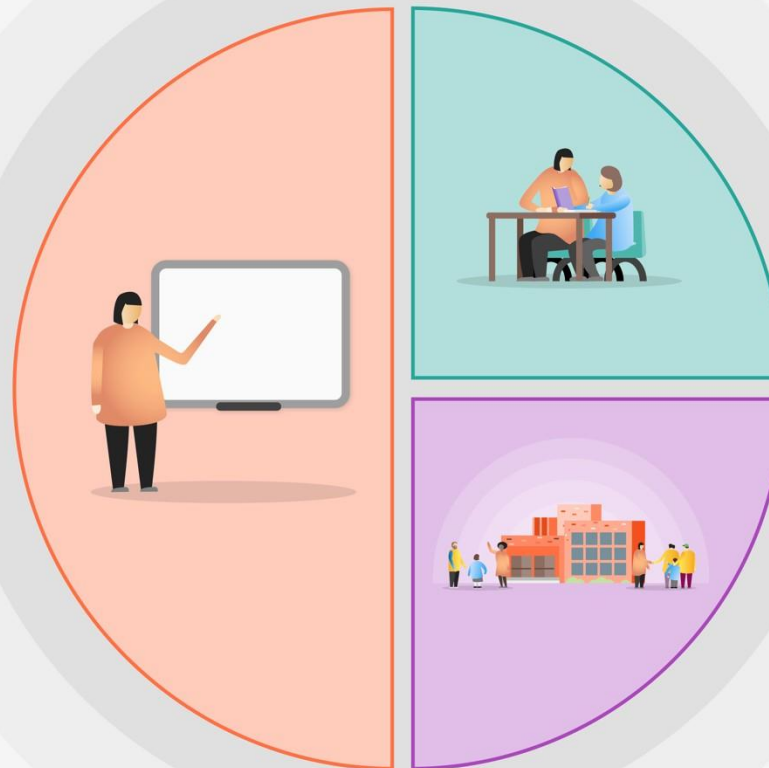




1 Teaching

- Assessment and baseline.
- Quality first teaching by all for all.
- Child led planning.
- Revision of previous years teaching for all as new work introduced.
- Recovery curriculum for first week, then introduce normal curriculum.
- Scaffolding of work for pupils so all can be successful.
- Use of metacognition and growth mind set strategies.
- Quality CPD for teaching and teaching assistant staff.
- Every class to have a TA for support and recovery strategies.



2 Targeted academic support

- Recognised interventions by trained staff for targeted support.
- Purchase of 30 chrome books for TA use with pupils.
- Nuffield Early years language programme
- Employing 2 reading mentors for across the school to support all pupils.

3 Wider strategies

- Enforcing support via the schools pastoral lead.
- Support for families via pastoral lead.
- Mind mechanics intervention programme.
- Food vouchers and support with uniform.