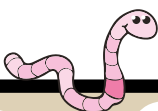
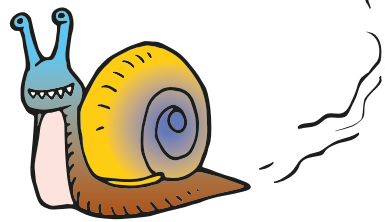
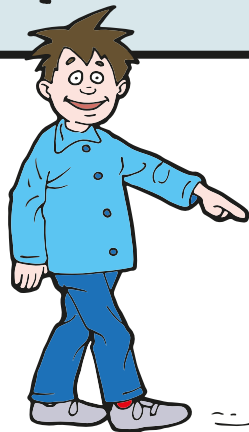


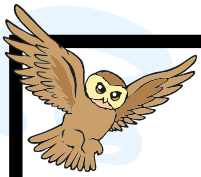


Story 7

Tommy and the Slimy Trail



7. Tommy and the Slimy Trail



Tommy sees a slimy trail on the garden path.

"I wonder who has made this trail," says Tommy.

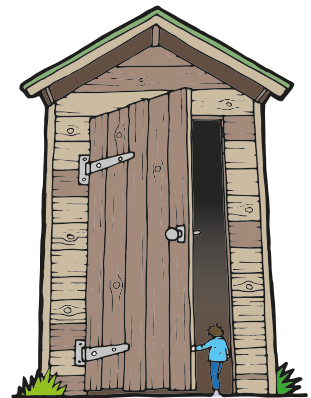
He follows the slimy trail down the path.



Tommy follows the trail to the garden shed.

"Can I see who has made the trail in the shed?" says Tommy.

Tommy can't see anything in the shed.



"No, I can't see anything in here," says Tommy.

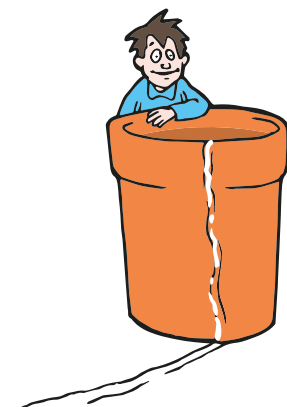
Tommy sees the trail go to the flower pot.

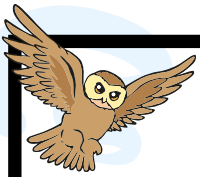
"I wonder if I will see anything in the flower pot," says Tommy.

Tommy follows the trail to the flower pot.

"Can I see who has made the trail in the pot?" says Tommy.

Tommy can't see anything in the pot.

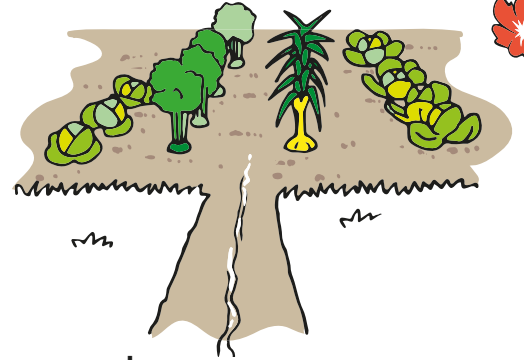




"No, I can't see anything in here," says Tommy.

Tommy sees the trail go down to the vegetable patch.

"I wonder if I will see anything in the vegetable patch," says Tommy.



Tommy follows the trail to the vegetable patch.

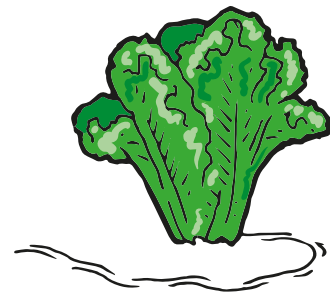
"Can I see who has made the trail in the vegetable patch?" says Tommy.

He looks at the cabbage leaves. He can see big bite marks.

"Something has eaten the cabbage leaves," says Tommy.

"I think I know who eats cabbage leaves."

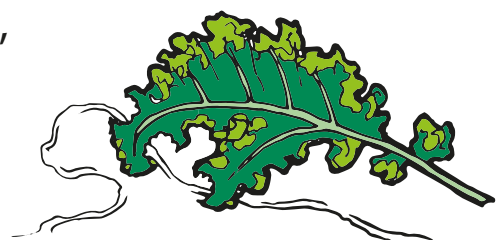
Do you know who eats cabbage leaves?

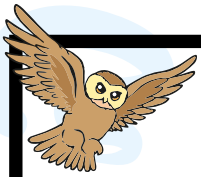


Tommy sees the trail go to the kale.

He looks at the kale leaves. He can see big bite marks.

"I think I know who eats kale leaves," says Tommy.

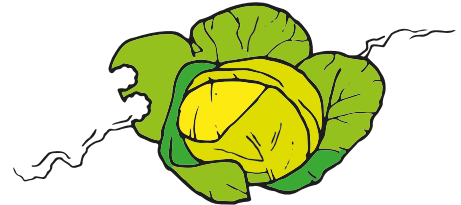




Tommy sees the trail go to the rows of lettuces.

"I wonder if I will see who's made the trail now," says Tommy.

Tommy follows the trail to the lettuce.



"Now I know who's made the trail," says Tommy.

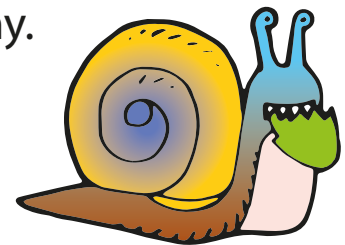
"Now I know who's eating the lettuce leaves."

The snail has made the trail and the snail has eaten the lettuce leaves.

"Stop eating the lettuce leaves," says Tommy.

"You're not a friend to the garden."

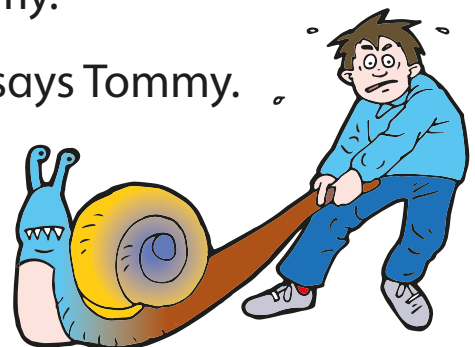
He tries to pull the snail off the lettuce.



He pulls the snail's foot. The snail is slimy.

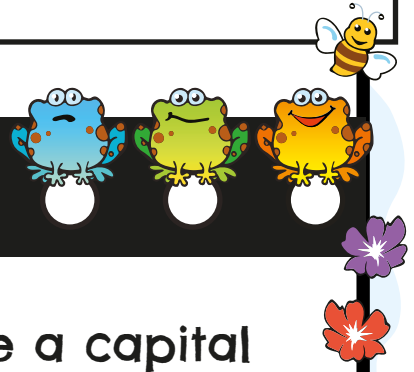
"Yuk! Now I've got snail slime on me," says Tommy.

The snail carries on eating the lettuce.





Name: _____



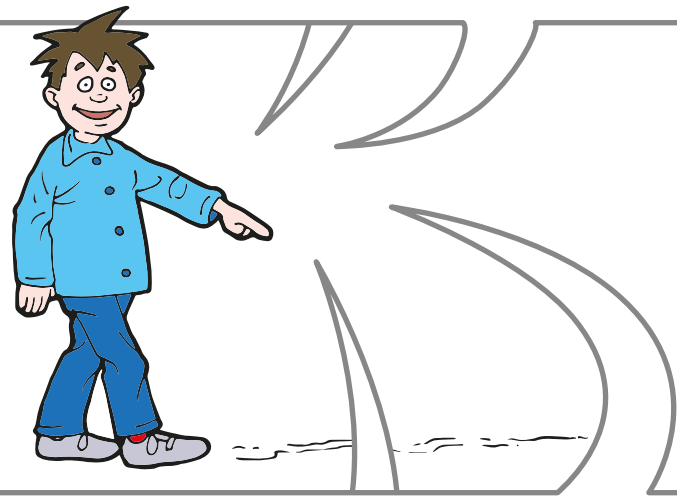
I can use a capital letter for the personal pronoun 'I'. 1

When we write the word 'i' we always use a capital letter - even if it's in the middle of a sentence.

Change 'i' to 'I' in the sentences below.

1 i am Tommy Toe.
.....

2 i am following a trail.
.....



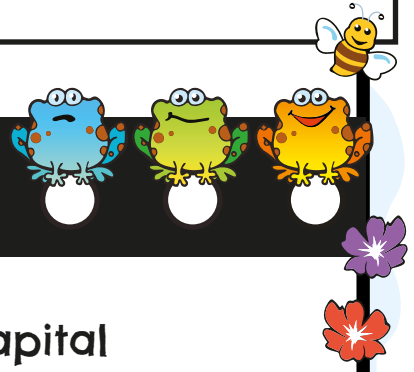
3 Can i follow the snail trail?
.....

4 i wonder where i will go.
.....





Name: _____



I can use a capital letter for the personal pronoun 'I'. 1

When we write the word 'I' we always use a capital letter - even if it's in the middle of a sentence.

Change 'i' to 'I' in the sentences below.

1 i am Tommy and i am following a trail.
.....

2 i wonder where i will go.
.....



3 i think i can see a snail.
.....

4 i'm sure i can see a snail eating leaves.
.....



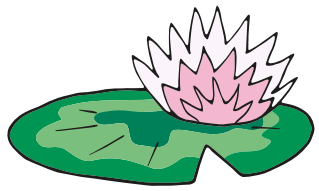


Name: _____

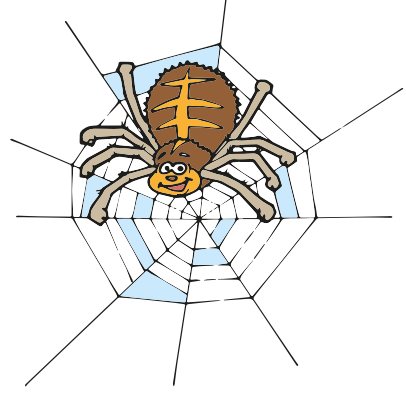


I can use a capital letter for the personal pronoun 'I'. 2

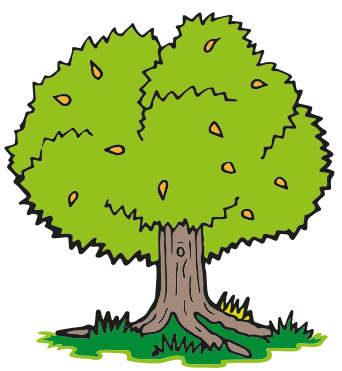
1



2



3



4



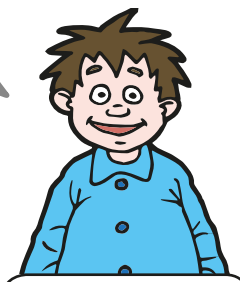
Pretend you are Tommy. Write your own sentences using the personal pronoun 'I'.

1 This is where I saw the frog.

2

3

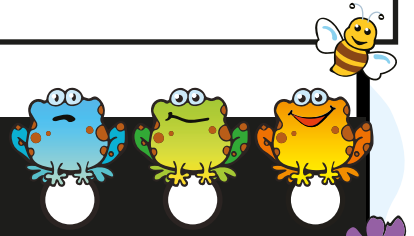
4



Year 1 • Term 2



Name: _____



I can use a capital letter for the personal pronoun 'I'. 2



Pretend you are Tommy. Write sentences about what you did in the garden using the personal pronoun 'I'.

.....

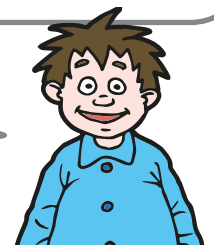
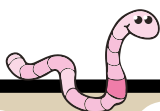
.....

.....

.....

.....

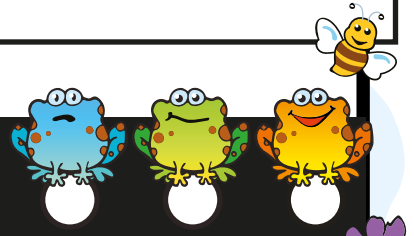
.....



Year 1 • Term 2



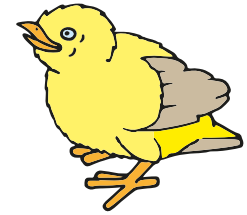
Name: _____



I can use capital letters for names and the personal pronoun 'I'. 3

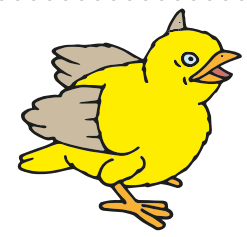
Read the sentences about Tommy and put in all the missing capital letters.

1 tommy has a friend called peewee.



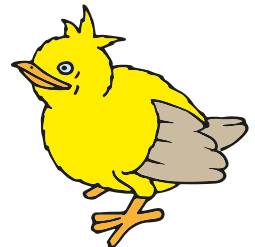
.....

2 peewee has a brother called yipyap.



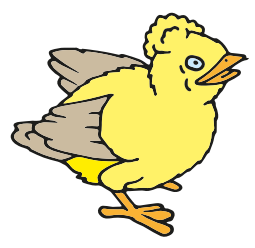
.....

3 i can see cheepie in a tree.

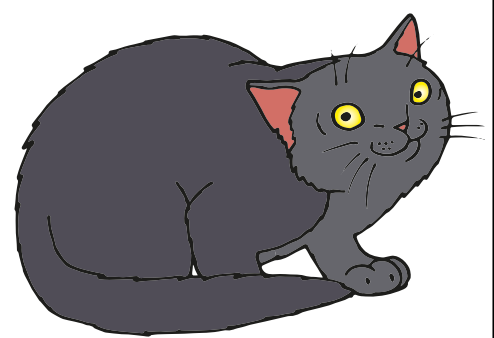


.....

4 does tweetie know i can see rambo?

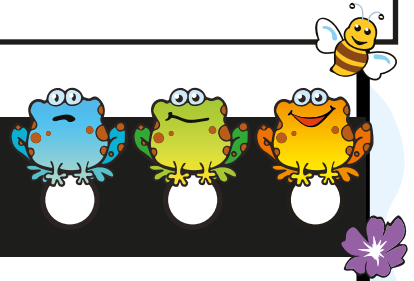


.....





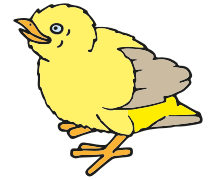
Name: _____



I can use capital letters for names and the personal pronoun 'I'. 3

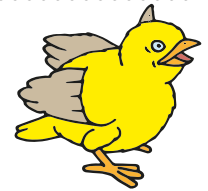
Read the sentences about Tommy and put in all the missing capital letters.

1 tommy has a friend called peewee.



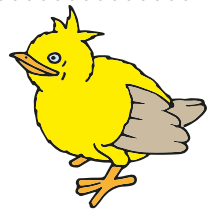
.....

2 peewee has a brother called yipyap.



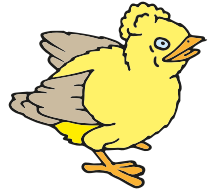
.....

3 i can see cheepie in a tree.



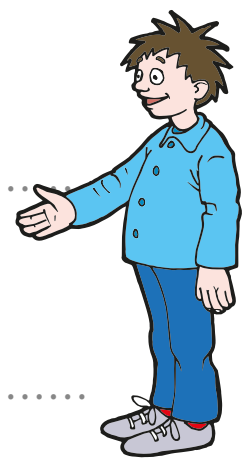
.....

4 does tweetie know i can see rambo?



.....

5 i will see tommy on sunday.



.....

6 will i play with tommy on monday?

.....

