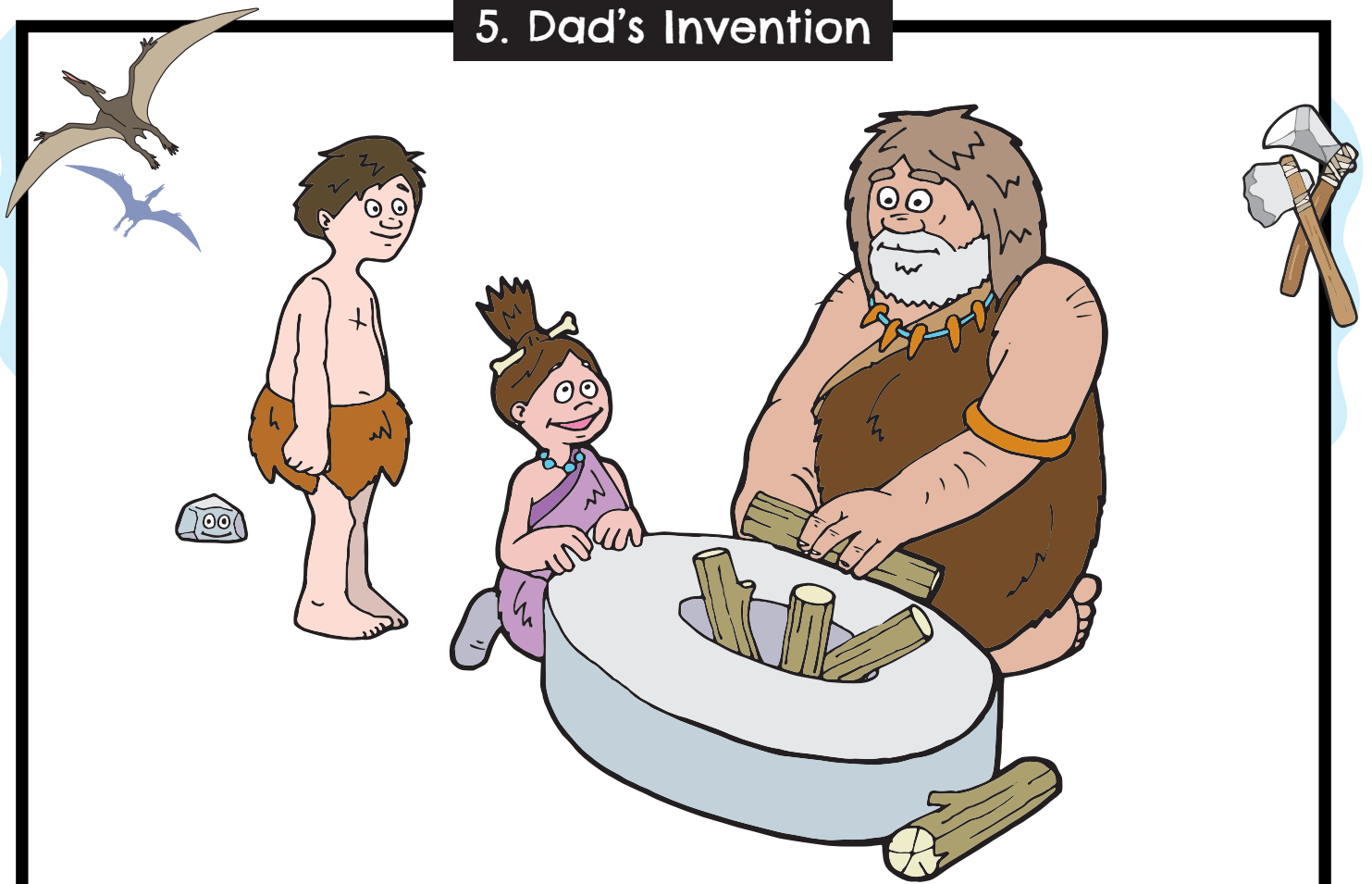


## 5. Dad's Invention



Axel finished painting the walls in all the caves.

He got his brush and paints and headed back home.

Mum was pleased to see him.

"Look at Dad's invention," she said.

Axel walked in the cave. "Ouch!" he yelled.

He had stepped on Tuft's rock. Then he saw Dad's invention.

It was made of stone. It was round with a hole in the middle.

"Wow!" said Axel. "What is it?"

"It's a firestone," said Dad. "You put logs in the hole in the middle."

"It keeps your baby sister away from the fire," said Mum.

"It's Ash's firestone!" said Dad proudly. "It will go down in history!"





Name: \_\_\_\_\_

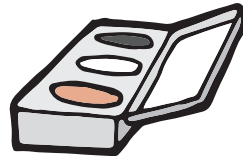


# I can use the apostrophe for possession.

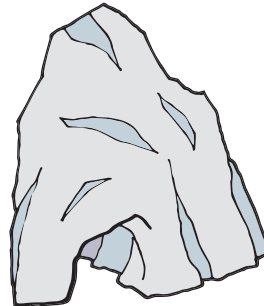
An apostrophe is used to show possession. Possession means that something belongs to somebody or something.

Add apostrophes where they are needed.

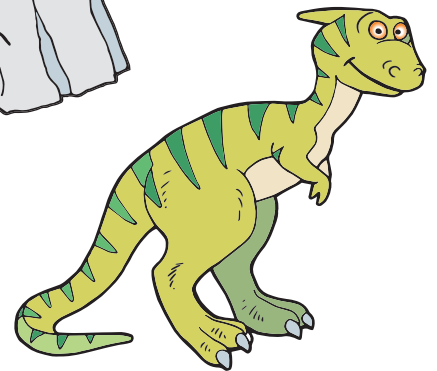
1 Here are Axel s paints.



2 Here is Tuft s rock toy.



3 Here is Sol s and Luna s cave.



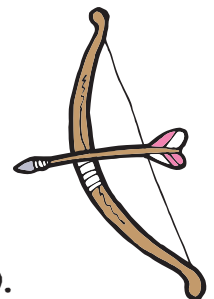
4 Here is Dusk s pet dinosaur.



5 Here is Flame s fur dress.



6 Here is Ash s invention.



Write a sentence to show who this item belongs to.

This is .....



Find where the apostrophes for possession have been used in the story.





**I can use the apostrophe for possession.**

An apostrophe is used to show possession. Possession means that something belongs to somebody or something.

Write the phrases using the possessive form of the noun.  
(The first one has been done for you.)

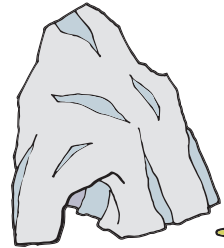
1 the paints of Axel – **Axel's paints**



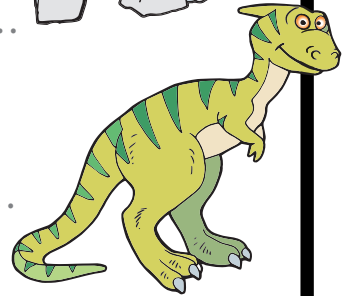
2 the toy rock of Tuft – .....



3 the cave of Sol and Luna – .....



4 the pet dinosaur of Dusk – .....



5 the fur dress of Flame – .....

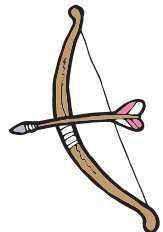


6 the invention of Ash – .....



Write sentences to show who these items belong to.

This is .....



This is .....



Find where the apostrophes for possession have been used in the story.